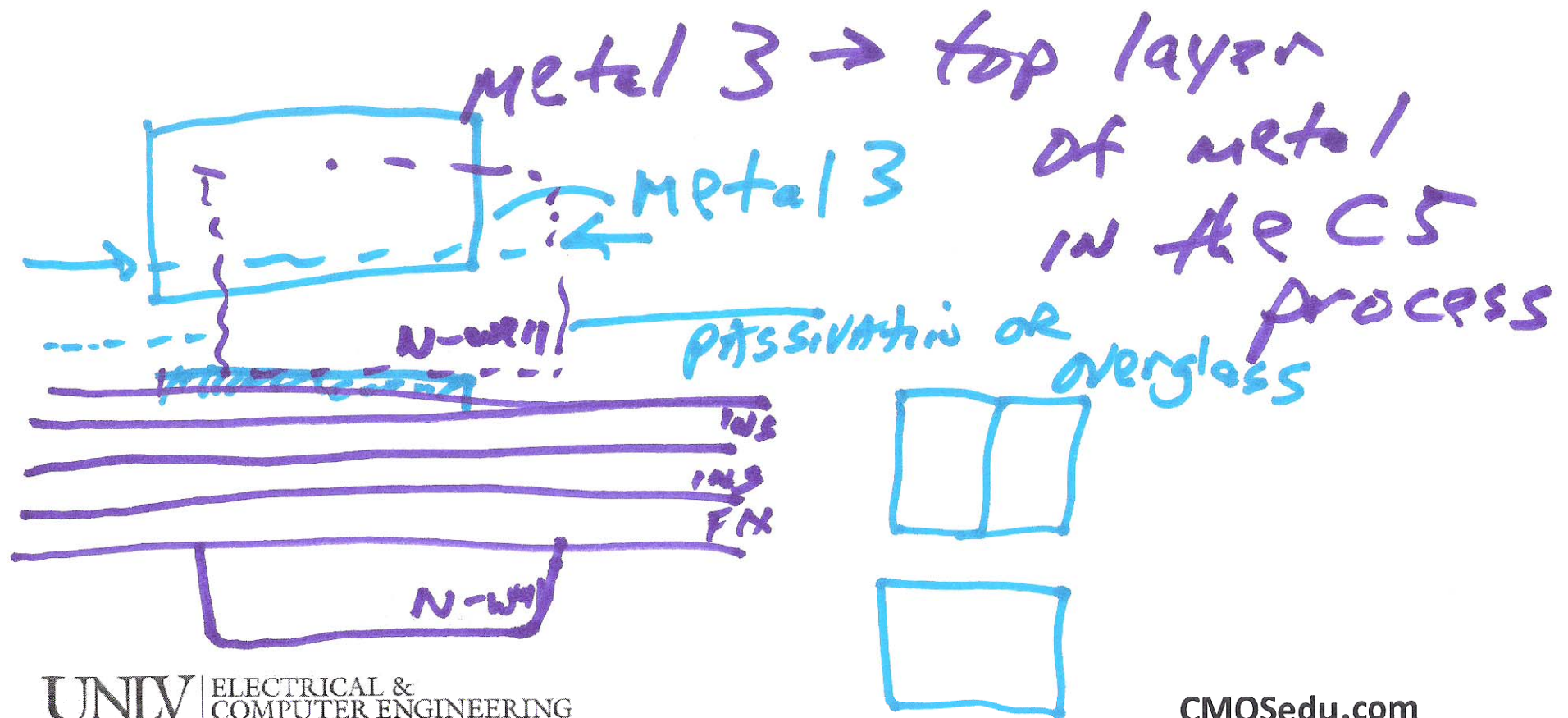
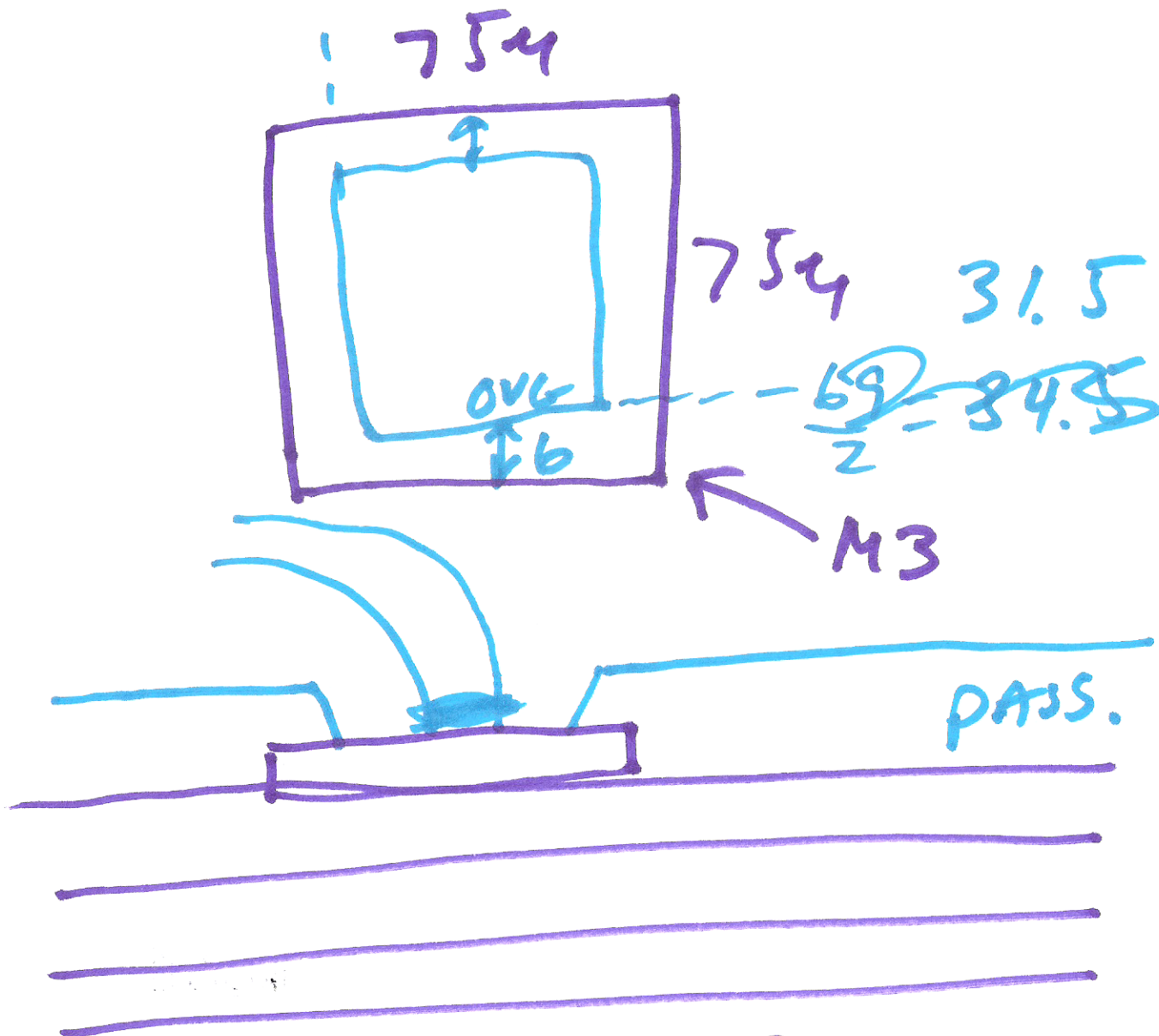


Sept. 15, 2014
Lecture 6

Metal layers
Layers N-well



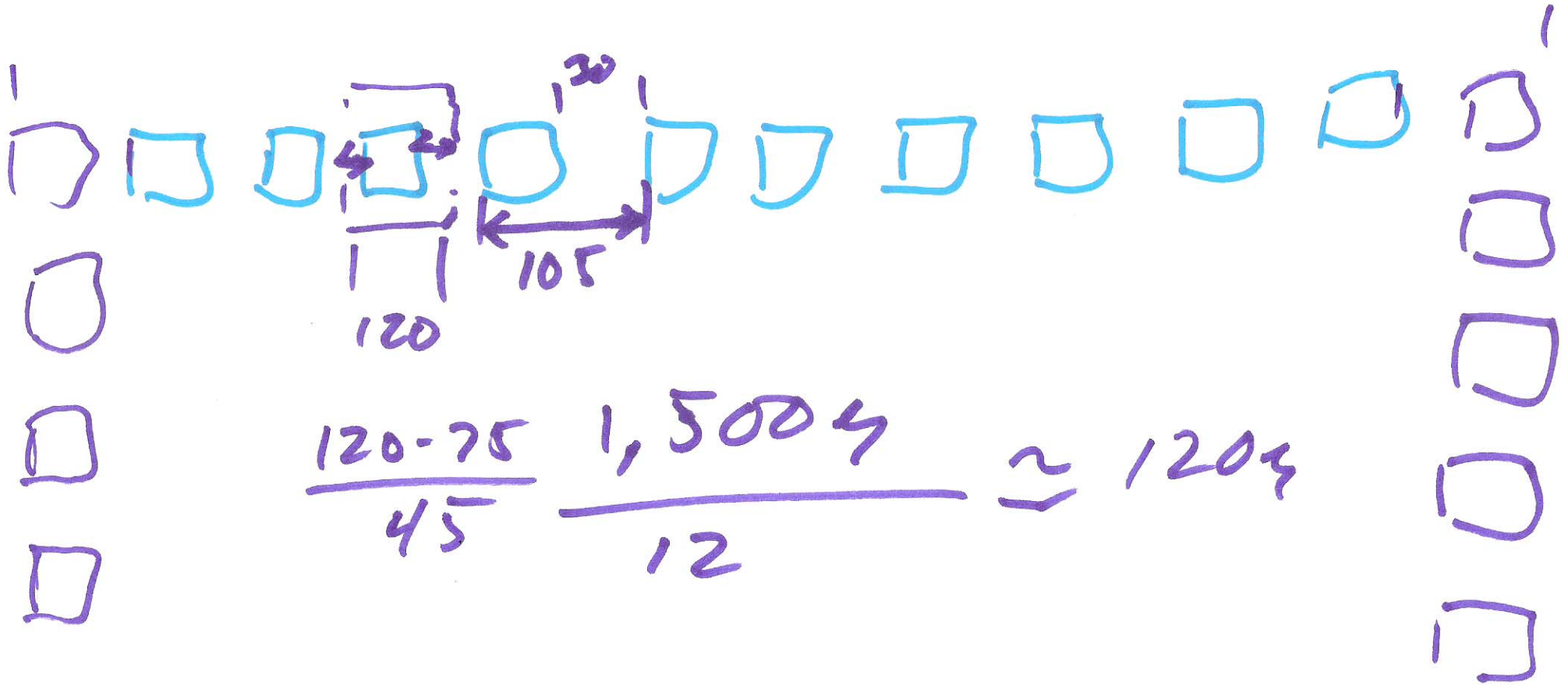
Bonding PAD



2)

1.5 mm x 1.5 mm

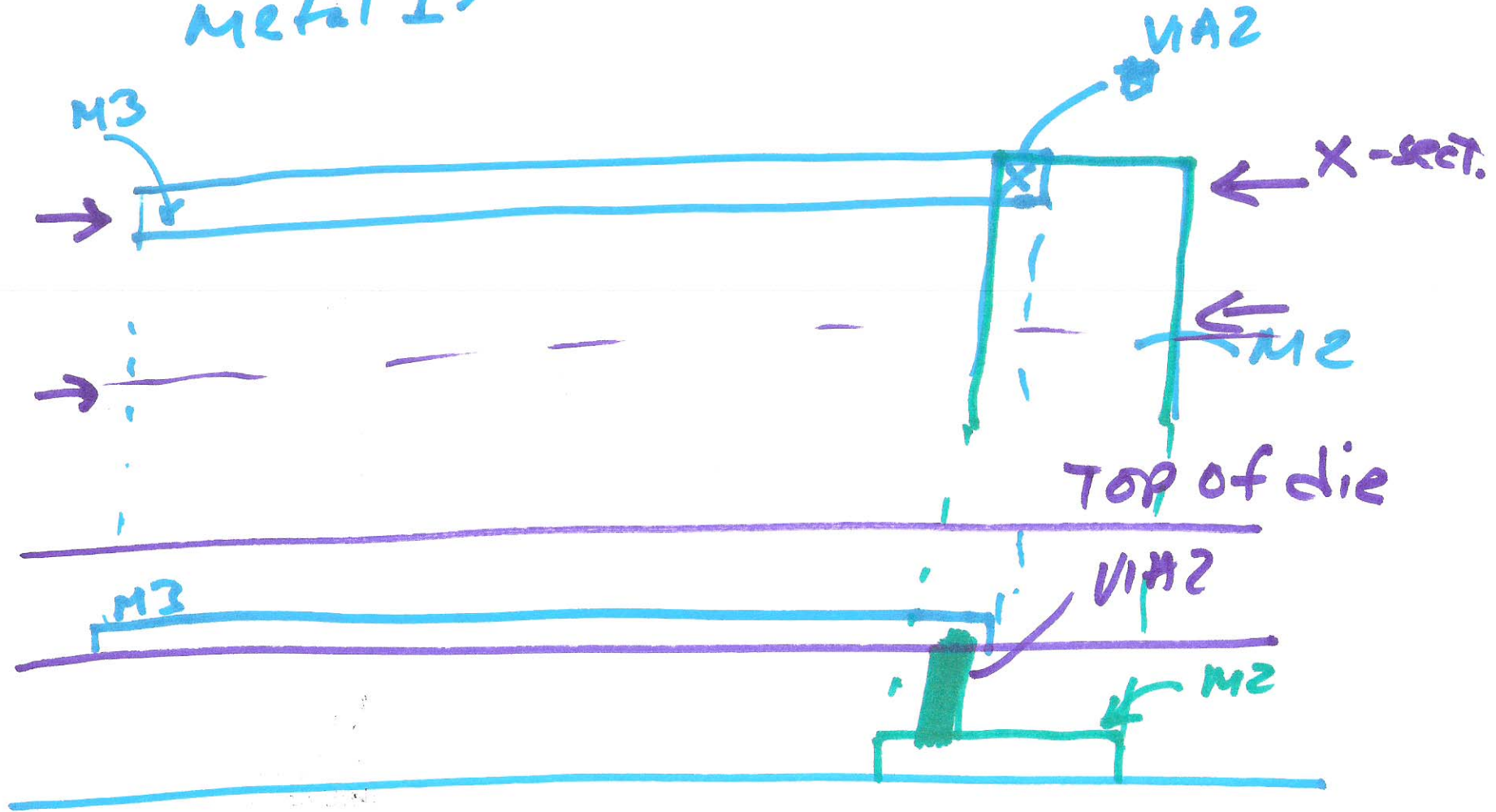
1,500 x 1,500

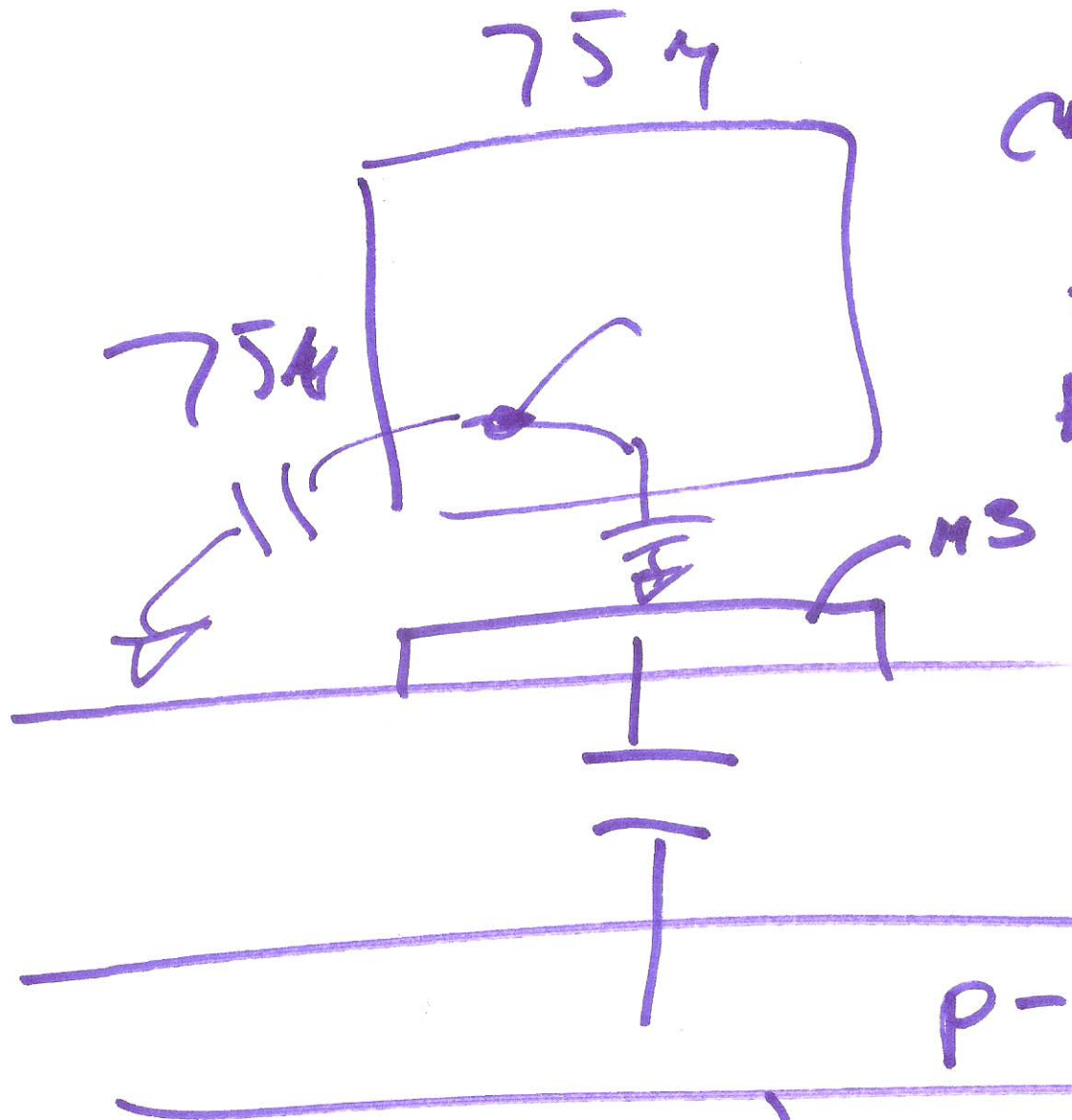


$$\frac{120 - 75}{45} \frac{1,500}{12} \approx 120$$

3)

N-well
Metal 3 } V.A2
Metal 2 } V.A1
Metal 1 }





CAP of PAD

$$AREA = (75 \mu m)^2$$

$$PERIMETER = 300 \mu m$$

$$AREA_{CAP} = \frac{319 F}{4 \mu m}$$

$$PERIMETER = \frac{64 \mu m}{4 \mu m}$$

$$C_{PAD} = \frac{319 F}{64 \mu m} \cdot 75 \mu m \cdot 75 \mu m$$

$$+ \frac{319 F}{4 \mu m} \cdot 300$$

5)