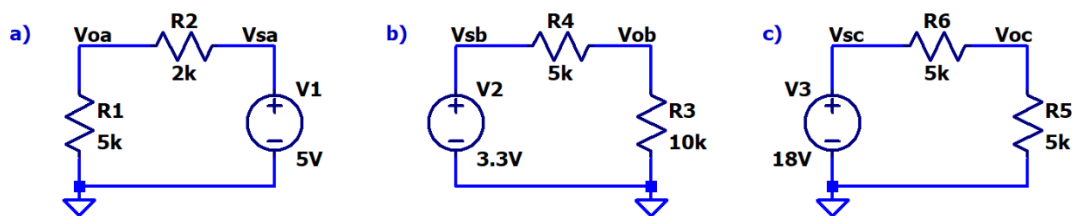


HW4 – Due Monday, February 7
EE220 – Circuits I
Spring 2022

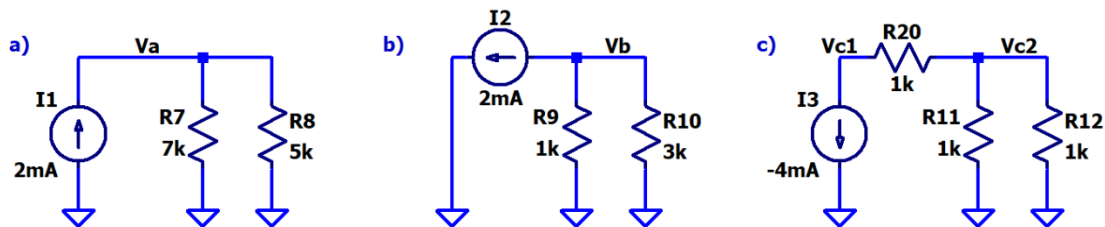
To get full credit:

- Show your work.
- Put a box around each of your answers.
- Make sure to **follow all instructions**.

1. Determine the voltages and currents in the circuits given below. **Do not combine the series resistors to form an equivalent.** Rather, use the voltage divider equation. Verify your work using LTspice. (3 points)



2. Determine the voltages and currents in each of the circuits given below. **Do not combine the parallel resistors to form an equivalent.** Rather, use the current divider equation. Verify your work using LTspice. (3 points)



3. Use **Kirchhoff's Voltage Law (KVL)** to determine the current flowing in the circuits below. Verify your work using LTspice. (3 points)

