



US007421607B2

(12) **United States Patent**
Li et al.

(10) **Patent No.:** **US 7,421,607 B2**
(45) **Date of Patent:** ***Sep. 2, 2008**

(54) **METHOD AND APPARATUS FOR PROVIDING SYMMETRICAL OUTPUT DATA FOR A DOUBLE DATA RATE DRAM**

(56) **References Cited**

U.S. PATENT DOCUMENTS

(75) Inventors: **Wen Li**, Boise, ID (US); **Aaron Schoenfeld**, Boise, ID (US); **R. Jacob Baker**, Meridian, ID (US)

4,682,343	A	7/1987	Pfiffner
5,341,405	A *	8/1994	Mallard, Jr. 375/376
5,422,835	A	6/1995	Houle et al.
5,467,464	A	11/1995	Oprescu et al.
5,535,187	A	7/1996	Melas et al.
5,614,845	A	3/1997	Masleid
5,668,982	A *	9/1997	Davis 713/600
5,734,685	A	3/1998	Bedell et al.

(73) Assignee: **Micron Technology, Inc.**, Boise, ID (US)

(*) Notice: Subject to any disclaimer, the term of this patent is extended or adjusted under 35 U.S.C. 154(b) by 0 days.

This patent is subject to a terminal disclaimer.

(Continued)

OTHER PUBLICATIONS

(21) Appl. No.: **11/751,182**

Wen Li et al., "Method and Apparatus for Output Data Synchronization With System Clock in DDR," filed Jun. 1, 2000.

(22) Filed: **May 21, 2007**

(65) **Prior Publication Data**

Primary Examiner—Abdelmoniem Elamin
(74) *Attorney, Agent, or Firm*—Dickstein Shapiro LLP

US 2007/0220295 A1 Sep. 20, 2007

Related U.S. Application Data

(57) **ABSTRACT**

(63) Continuation of application No. 10/759,077, filed on Jan. 20, 2004, now Pat. No. 7,237,136, which is a continuation of application No. 09/653,409, filed on Aug. 31, 2000, now Pat. No. 6,704,881.

An apparatus and method is disclosed to compensate for skew and asymmetry of a locally processed system clock used to synchronize an output signal, e.g., a data signal or a timing signal, from a logic circuit, for example a memory device. A first phase detector, array of delay lock loop (DLL) delay elements and accompanying circuitry are disclosed to phase-lock the rising edge of the output signal with the rising edge of the system clock XCLK signal. Additionally, a comparator circuit, a register delay, an array of DLL delay elements and accompanying circuitry are disclosed to add or subtract delay from the falling edge of the DQ signal in order to produce a symmetrical output of the DQ signal.

(51) **Int. Cl.**

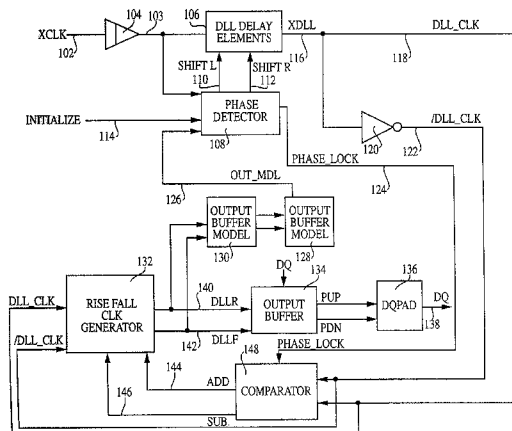
G06F 13/42 (2006.01)

(52) **U.S. Cl.** **713/401; 713/400; 713/500; 713/501; 713/502; 713/503; 713/600; 713/601; 326/93; 327/141; 327/263**

(58) **Field of Classification Search** **713/400, 713/401, 500-503, 600, 601; 326/93; 327/141, 327/263**

See application file for complete search history.

17 Claims, 9 Drawing Sheets



US 7,421,607 B2

Page 2

U.S. PATENT DOCUMENTS						
5,818,895	A *	10/1998	Oh	377/118	6,038,195 A 3/2000 Farmwald et al.	
5,841,580	A	11/1998	Farmwald et al.		6,044,032 A 3/2000 Li	
5,886,582	A *	3/1999	Stansell	331/1 A	6,067,592 A 5/2000 Farmwald et al.	
5,914,996	A	6/1999	Huang		6,088,602 A * 7/2000 Banister	455/574
5,917,760	A	6/1999	Millar		6,101,152 A 8/2000 Farmwald et al.	
5,953,263	A	9/1999	Farmwald et al.		6,111,447 A * 8/2000 Ternullo, Jr.	327/292
5,964,880	A	10/1999	Liu et al.		6,212,126 B1 4/2001 Sakamoto	
5,969,551	A	10/1999	Fujioka		6,212,359 B1 * 4/2001 Knox	725/135
6,002,281	A	12/1999	Jones et al.		6,249,168 B1 * 6/2001 Cairns et al.	327/295
6,016,282	A	1/2000	Keeth		6,580,706 B1 * 6/2003 Silvestre et al.	370/350
6,023,436	A *	2/2000	Han	365/203	6,646,968 B1 11/2003 Miyaoka	
6,031,402	A	2/2000	Wang et al.		6,704,881 B1 * 3/2004 Li et al.	713/401
6,035,365	A	3/2000	Farmwald et al.		7,028,208 B2 4/2006 Johnson et al.	
					7,237,136 B2 * 6/2007 Li et al.	713/401

* cited by examiner

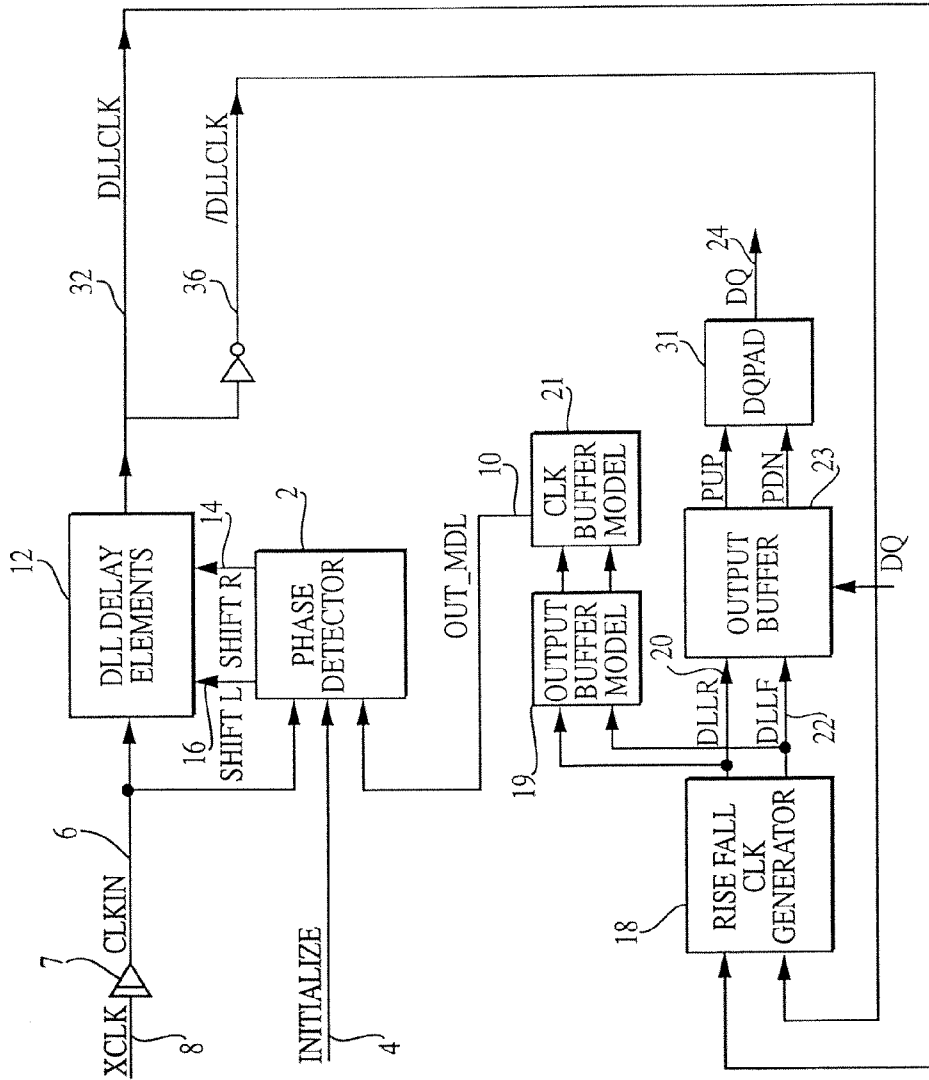


FIG. 1

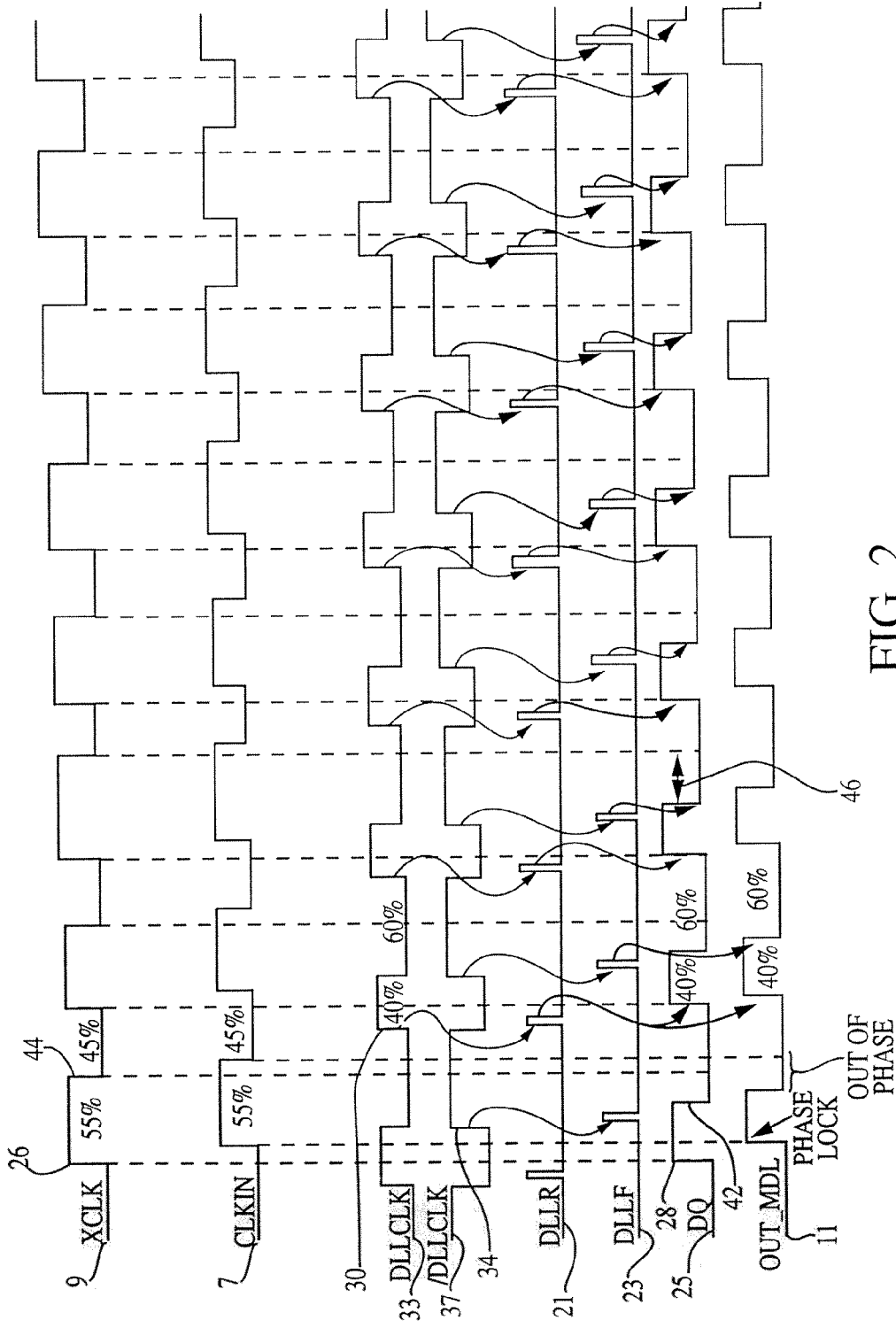


FIG. 2

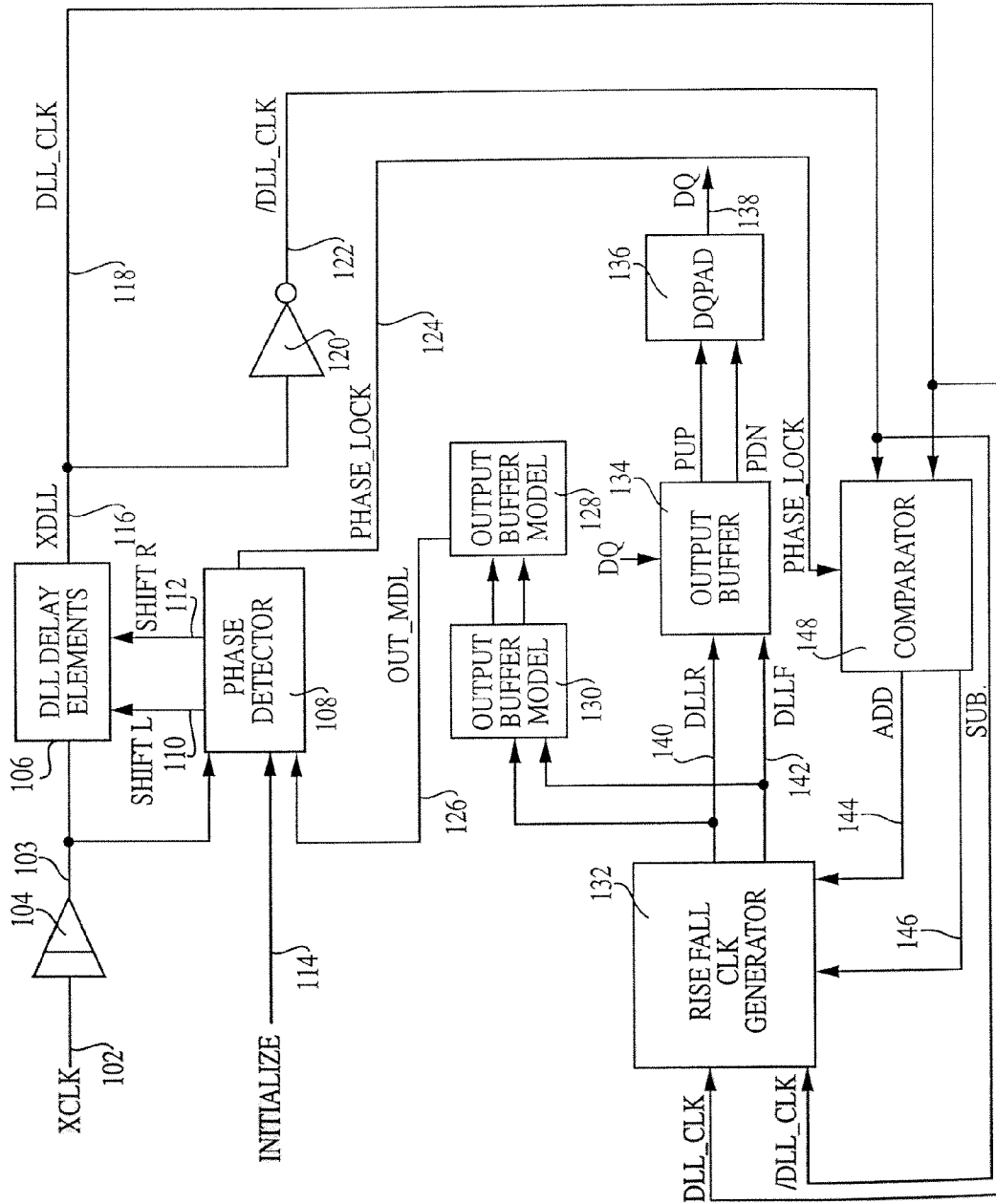


FIG. 3

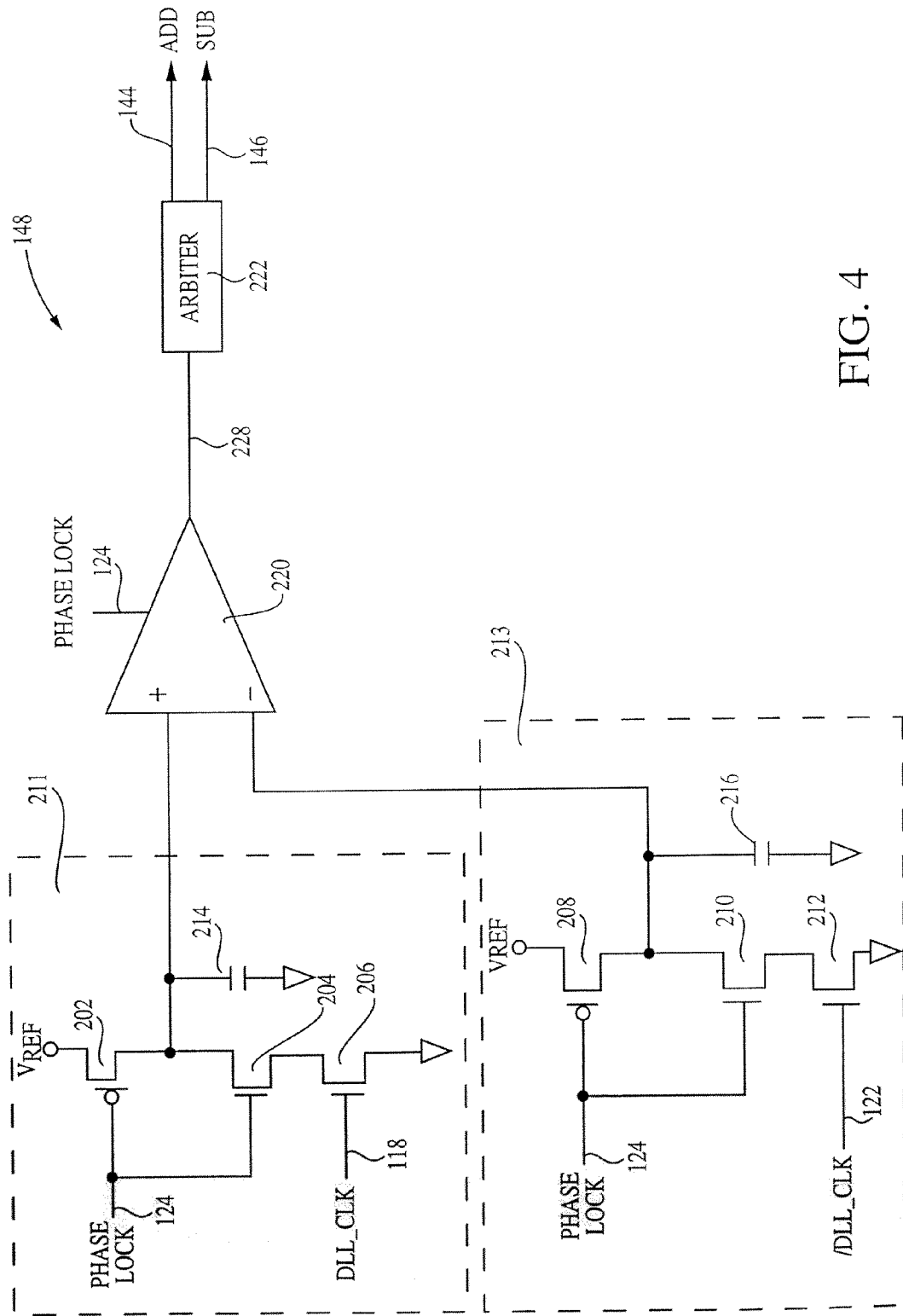


FIG. 4

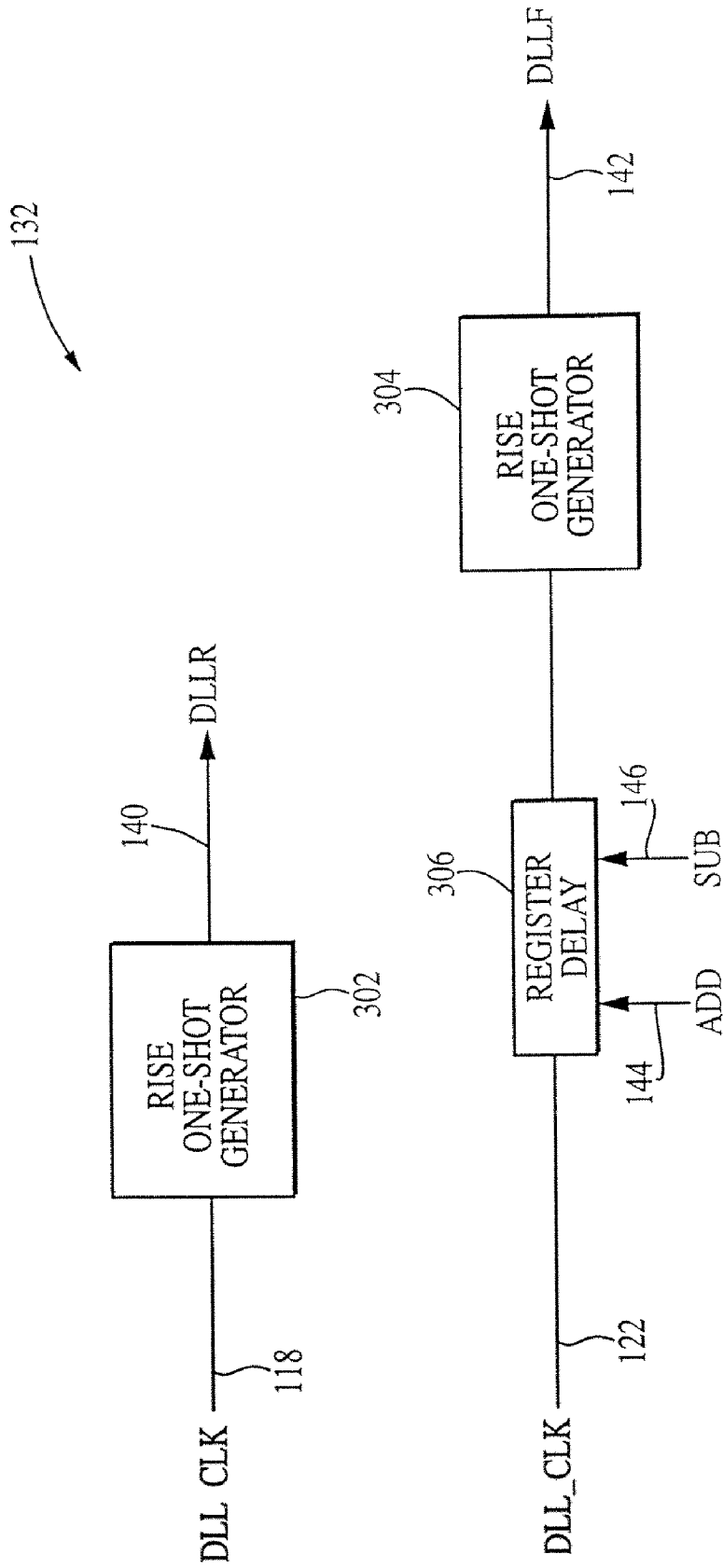


FIG. 5

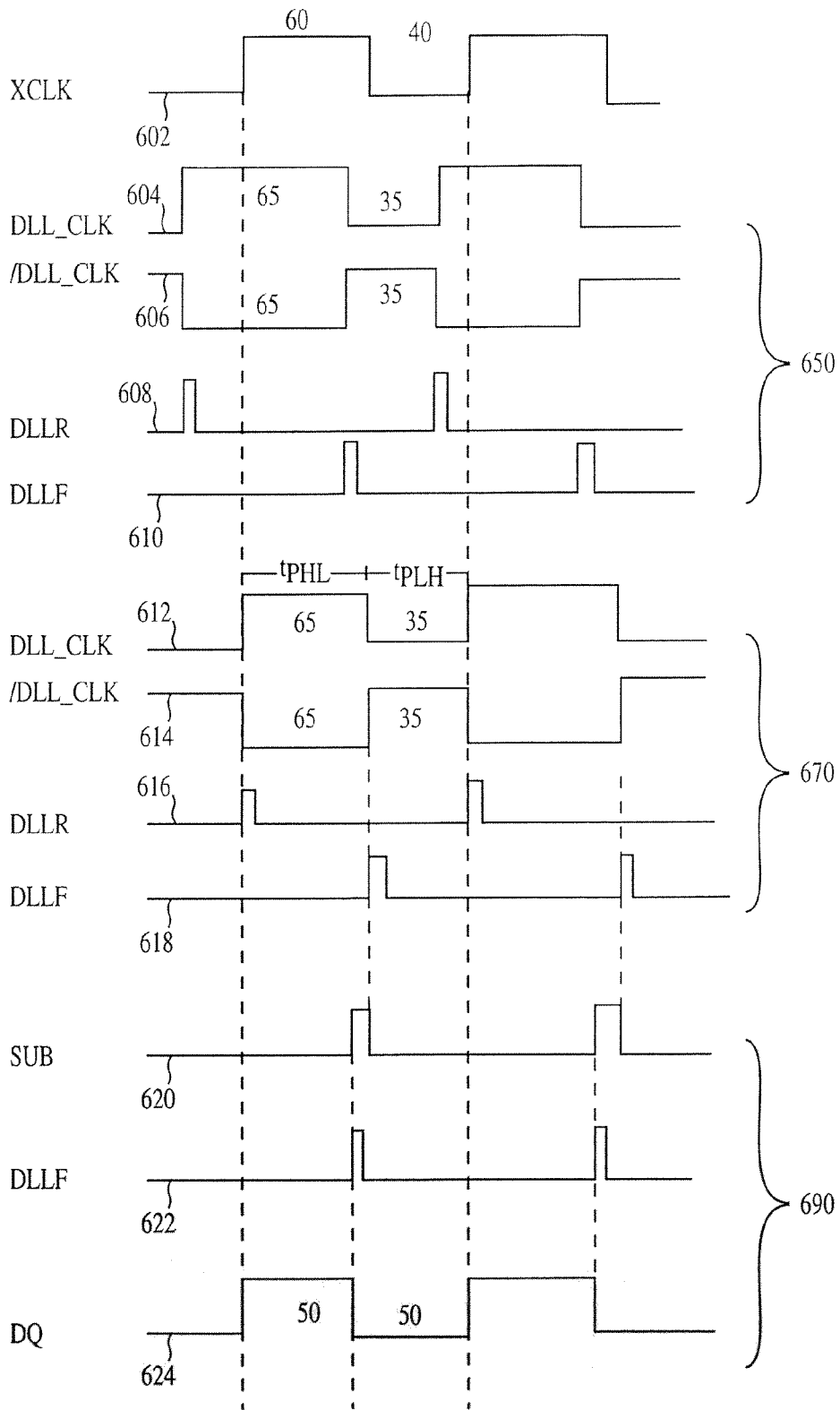


FIG. 6

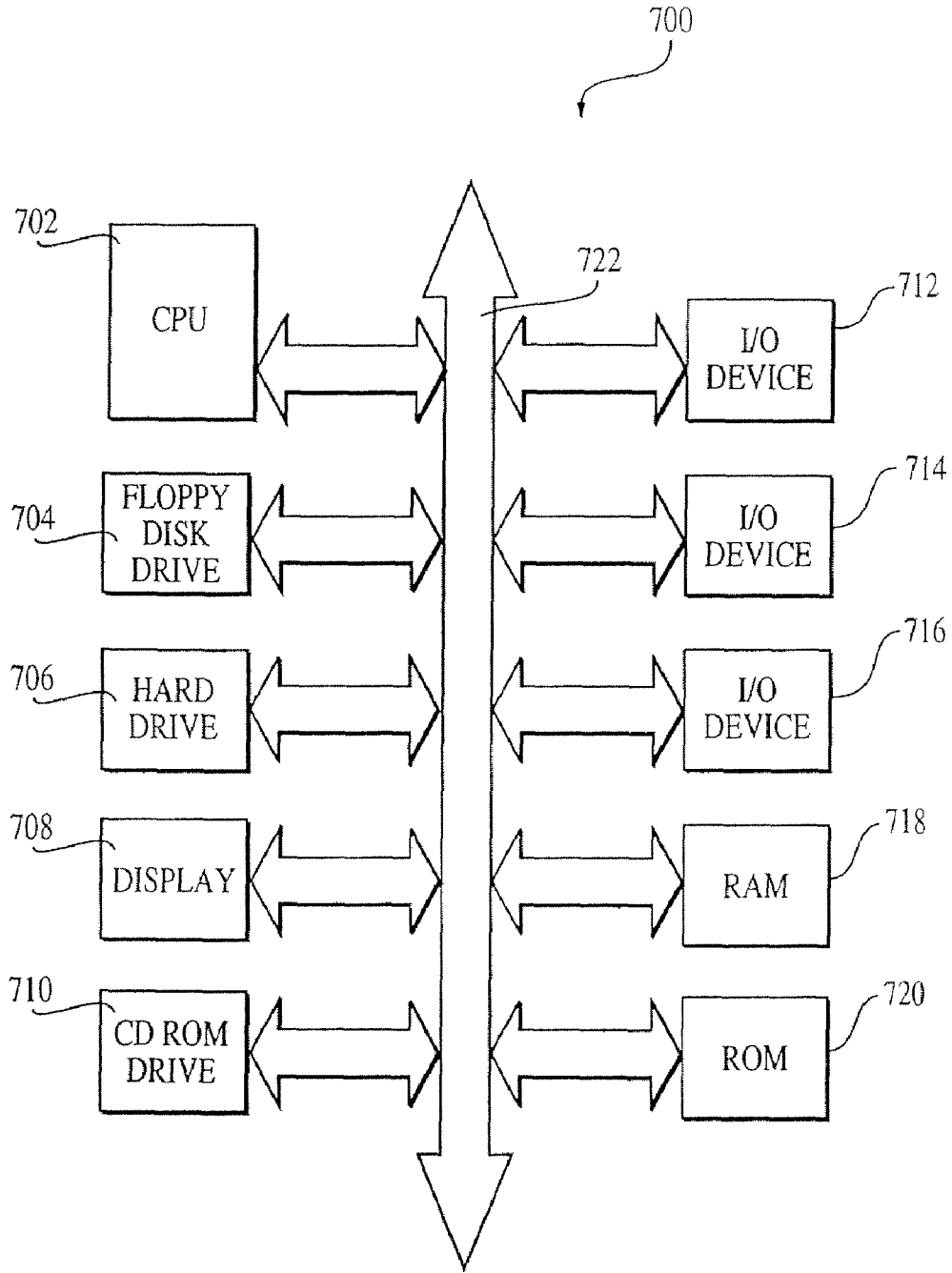


FIG. 7

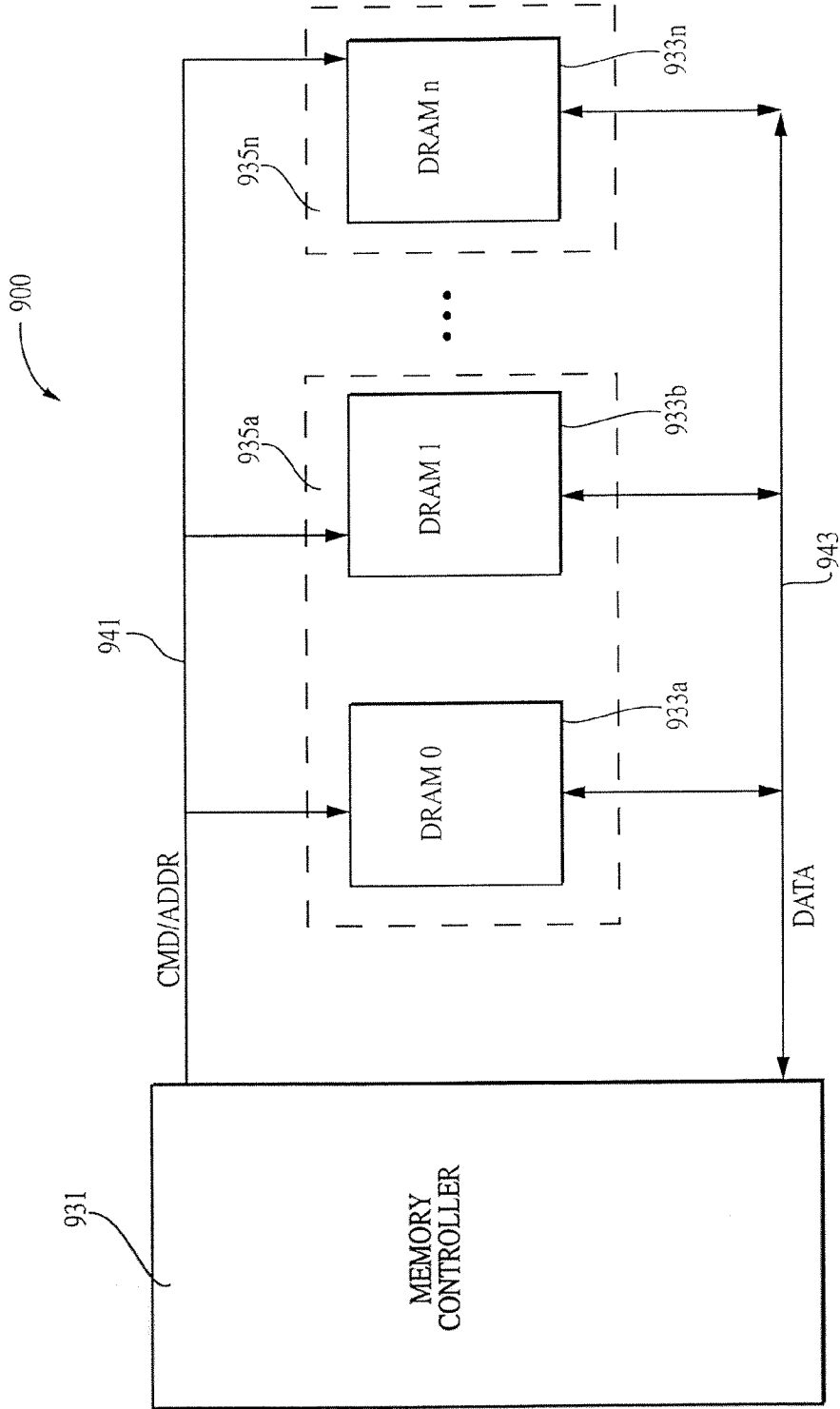


FIG. 8

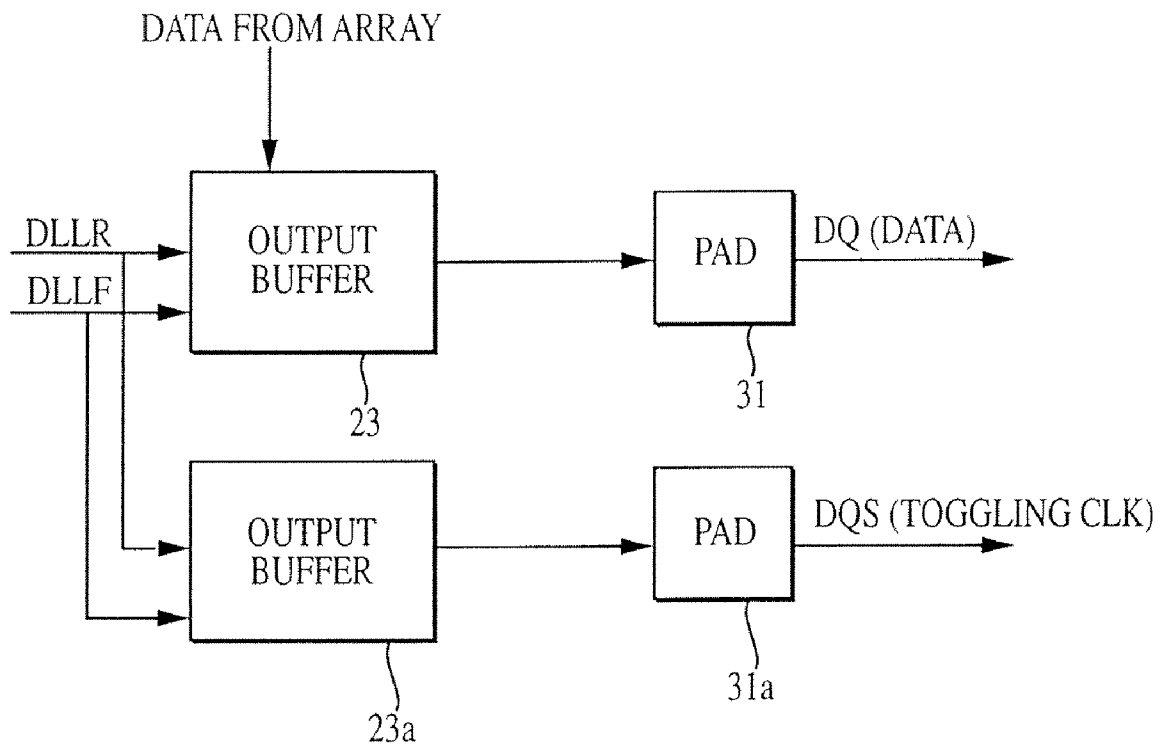


FIG. 9

METHOD AND APPARATUS FOR PROVIDING SYMMETRICAL OUTPUT DATA FOR A DOUBLE DATA RATE DRAM

This application is a continuation of application Ser. No. 10/759,077, filed Jan. 20, 2004, now U.S. Pat. No. 7,237,136, which is a continuation of application Ser. No. 09/653,409, filed Aug. 31, 2000, now U.S. Pat. No. 6,704,881, which are hereby incorporated by reference in their entireties.

FIELD OF THE INVENTION

The present invention relates generally to synchronizing the timing of data transfer with a system clock using a delay lock loop circuit. More particularly, the present invention relates to a method and apparatus for producing a symmetrical data clock by adding to or subtracting compensating delays to the falling edge of an internal clock.

BACKGROUND OF THE INVENTION

Modern high-speed integrated circuit devices, such as synchronous dynamic random access memories (SDRAM), microprocessors, etc., rely upon clock signals to control the flow of commands, data, addresses, etc., into, through, and out of the devices. Additionally, new types of circuit architectures such as SDRAM require individual circuits to work in unison even though such circuits may individually operate at different speeds. As a result, the ability to synchronize the operation of a circuit through the generation of local clock signals has become increasingly more important. Conventionally, data transfer operations are initiated at the edges of the local clock signals (i.e., transitions from high to low or low to high).

In synchronous systems, integrated circuits are synchronized to a common reference system clock. This synchronization often cannot be achieved simply by distributing a single system clock to each of the integrated circuits for the following reason, among others. When an integrated circuit receives a system clock, the circuit often must condition the system clock before the circuit can use the clock. For example, the circuit may buffer the incoming system clock or may convert the incoming system clock from one voltage level to another. This processing introduces its own delay and/or skew, with the result that the locally processed system clock, often will no longer be adequately synchronized with the incoming system clock. In addition, the system clock itself may have a certain amount of skew within a tolerance set by system specifications. For example, an exemplary DDR SDRAM system may allow a system clock skewed to have a duty cycle of 55%/45%. The trend towards faster system clock speeds further aggravates this problem since faster clock speeds reduce the amount of delay, or clock skew, which can be tolerated.

To remedy this problem, an additional circuit is conventionally used to synchronize the locally processed clock to the system clock. Two common circuits which are used for this purpose are the phase-locked loop (PLL) and the delay-locked loop (DLL). In the phase-locked loop (PLL), a voltage-controlled oscillator produces the local clock. The phases of the local clock and the system clock are compared by a phase-frequency detector, with the resulting error signal used to drive the voltage-controlled oscillator via a loop filter. The feedback via the loop filter phase locks the local clock to the system clock.

In contrast, the delay-locked loop (DLL) generates a synchronized local clock by delaying the incoming system clock

by an integer number of periods. More specifically, the buffers, voltage level converters, etc. of the integrated circuit device, for example the input buffers of an SDRAM memory device, introduce a certain amount of delay. The delay-locked loop (DLL) then introduces an additional amount of delay such that the resulting local clock is synchronous with the incoming system clock.

In certain synchronous circuit devices, for example double data rate (DDR) dynamic random access memory (DRAM), wherein operations are initiated on both the rising and the falling edges of the clock signals, it is known to employ a delay lock loop (DLL) to synchronize the output data with the system clock (XCLK) using a phase detector. In an exemplary case, the transition of the data signal is perfectly aligned with the rising or falling edge of the XCLK. The time from the rising or falling edge of the data clock to the time when the data is available on the output data bus (tAC) is within specifications. A phase detector is conventionally used to lock the rising edge of the output data signal from the DLL (DQ) to the rising edge of the XCLK. Since the rising edge of the DQ signal is phase-locked to the rising edge of the XCLK signal, the rising edge of data being output from the device is synchronized with the system clock XCLK.

FIG. 1 depicts a DDR DRAM data synchronizing circuit using a DLL as is presently contemplated in the art. A DQ data output signal from an array is input to output buffer 23 and has its timing adjusted to be synchronized with the XCLK signal 8. At system initialization, a phase detector 2 is activated by an initialization signal 4. The phase detector 2 compares the phase of the CLKIN signal 6, a processed signal derived from the XCLK signal 8, with the OUT_MDL signal 10, a model of the data output signal DQ. The phase detector 2 then adjusts the DLL delay elements 12 using respective ShiftR 14 and ShiftL 16 signals, to respectively decrease or increase the time delay added to the CLKIN signal 6 with respect to the OUT_MDL signal 10.

The Output Buffer Model 19 models the delays generated by the Output Buffer 23 and the CLK Buffer Model 21 models the delays generated by the Input Buffer 7 to produce an OUT_MDL signal 10 such that alignment of the OUT_MDL signal 10 with the CLKIN signal 6 will result in alignment of the XCLK signal 8 with the DQ data output signal 24. By adjusting the delay of the CLKIN signal 6 through the DLL delay elements 12, the phase detector 2 can align the rising edge of the DQ output signal 24 with the rising edge of the XCLK signal 8.

The output data signal DQ 24 is provided to a data pad 31 and is synchronized with the system clock XCLK 8.

In addition, the FIG. 1 circuit can also be used to adjust an output toggle clock signal DQS as shown in FIG. 9. In this case, an additional output buffer 23a is used to generate the DQS signal at pad 31a. The DQS signal can be used for timing purposes, such as a data strobe signal. For purposes of simplifying the discussion below, the background discussion and the discussion of the invention will be described in the context of synchronizing the data output signal DQ with the system clock XCLK 8, but the discussions herein apply to also synchronizing a DQS signal with the system clock XCLK.

FIG. 2 is a timing diagram for the synchronizing circuitry of FIG. 1. As shown in FIG. 2, the rising edge 26 of the XCLK signal 9, which is carried on the XCLK signal line 8 of FIG. 1, is aligned with the rising edge 28 of the DQ signal 25, which is carried on the DQ signal line 24 of FIG. 1. As is indicated by the arrows shown in FIG. 2, the rising edge 30 of the DLLCLK signal 33 (carried on the DLLCLK signal line 32 of FIG. 1) initiates the rise and fall of the DLLR signal 21 (carried on the DLLR signal line 20 of FIG. 1), through the

Rise Fall CLK Generator **18** (FIG. 1), which in turn initiates the rising edge **28** of the DQ signal **25**. Likewise, the rising edge **34** of the DLLCLK* signal **37** (carried on the DLLCLK* signal line **36**) initiates the rise and fall of the DLLF signal **23** (carried on the DLLF signal line **22** of FIG. 1) which in turn initiates the falling edge **42** of the DQ signal **25**. For proper data synchronization, the rising edges of the XCLK **9** and DQ **25** should be aligned within an allowed tolerance and the duty cycle of the data output timing signal DQ **25** should be within the specifications for the system in which the synchronizing circuitry will be used.

Unfortunately, however, not all synchronizing circuitry components are ideal or even exemplary. Non-symmetrical delays can be created by the input processing of the system clock including input buffering of the system clock signal using the buffer **7**. The system clock itself may exhibit an asymmetric duty cycle, for example, up to a 55/45 duty cycle for a typical SDRAM. Variations in layout, fabrication processes, operating temperatures and voltages, and the like, result in non-symmetrical delays among the DLL Delay Elements **12**. All of these non-symmetrical delays produce output timing signals of the DLL exhibiting a difference between the duration of a high (tPHL) and low (tPLH) portion of the DLL output signal. As shown in FIG. 6, the high and low tPHL and tPLH signal portions, respectively, refer to the amount of time between transitions of the signal. If a signal remains high for a period longer than it stays low, then that signal is said to be asymmetric. On the other hand, if a signal is high and low for equal periods of time, then that signal is said to be symmetric.

Non-symmetrical delays also result in a skewed data eye and a larger difference **46** (FIG. 2) between the falling edge **44** of the XCLK signal **9** and the falling edge **42** of the DQ signal **25**. In other words, as shown in FIG. 2, for an XCLK signal **9** having a 55/45 duty cycle, due to inconsistencies in the DLL delay elements **12** (FIG. 1), the DLLCLK **33** and DLLCLK* **37** signals may have a duty cycle of 40/60. Because it is the rising edge **30** of the DLLCLK signal **33** and the rising edge **34** of the DLLCLK* signal **37** from which the rising **28** and falling **42** edges, respectively, of the DQ signal **25** result, the non-symmetrical delays may result in a non-functional system. Furthermore, because the number of DLL Delay Elements used is cycle time dependent, the skew and difference **46** are also cycle time dependent. This unpredictable skew is undesirable for reliable high speed performance.

Therefore, there is a strong desire and need for synchronizing circuitry which compensates for the lack of symmetry in a signal synchronized by a delay-locked loop circuit with a system clock, thus enabling more reliable performance at high speeds.

SUMMARY OF THE INVENTION

The present invention provides a method and apparatus to compensate for skew and asymmetry of a locally processed system clock used to synchronize an output signal (e.g., a DQ data or DQS timing output signal) from a digital circuit, for example a memory device.

In its apparatus aspects the invention provides a first phase detector, an array of DLL delay elements and accompanying circuitry to phase-lock the rising edge of an output signal (e.g., DQ or DQS signal) with the rising edge of the system clock XCLK signal. Additionally, a comparator circuit, a register delay, an array of DLL delay elements and accompanying circuitry are provided to add or subtract delay from the falling edge of the output signal in order to produce a sym-

metrical output signal. The symmetrical output signal provides an improved timing margin for a given cycle time.

In its method aspects, the invention compares a processed system clock with a signal representative of an output signal (e.g., DQ or DQS signal) to adjust a setting of a delay circuit to phase-lock a rising edge of the output signal to a rising edge of an unprocessed system clock signal, producing a first delayed timing signal. A second delay circuit is adjusted according to asymmetries in a duty cycle of the first delayed timing signal, producing at least a second delayed timing signal. At least the first and second delayed timing signals are used to produce a substantially symmetrical output signal.

BRIEF DESCRIPTION OF THE DRAWINGS

These and other advantages and features of the invention will be more clearly understood from the following detailed description which is provided in connection with the accompanying drawings in which:

FIG. 1 illustrates a block diagram of a portion of a conventional circuit for generating a synchronizing data output signal;

FIG. 2 illustrates a timing diagram for selected signals of FIG. 1;

FIG. 3 illustrates a block diagram of a portion of a circuit for generating a synchronizing data output signal in accordance with the present invention;

FIG. 4 illustrates a diagram of a portion of the circuit of FIG. 3;

FIG. 5 illustrates a block diagram of another portion of the circuit of FIG. 3;

FIG. 6 illustrates a timing diagram for selected signals of FIG. 3;

FIG. 7 illustrates a processor system employing a method and apparatus of the present invention;

FIG. 8 illustrates a partial block diagram of a memory system constructed in accordance with an embodiment of the invention; and

FIG. 9 illustrates a variation of the FIG. 1 circuit.

DETAILED DESCRIPTION OF THE PREFERRED EMBODIMENTS

For simplification, the invention will now be described with reference to synchronization of data output (DQ) from a memory device, it being understood that a memory device is not required, and that the invention applies to synchronizing the data output of any digital circuit which outputs data in a synchronized manner with reference to a system clock. In addition, the invention can also be used to produce a timing output signal DQS which is synchronized with a system clock.

FIG. 3 is a block diagram of an embodiment of a data synchronizing circuit according to the present invention. The embodiment in FIG. 3 includes a first phase detector **108** which, like phase detector **2** of FIG. 1, detects the relative phase between the CLKIN signal **103**, a derivative of the system clock signal XCLK **102**, and the OUT_MDL signal **126**, which models the timing of the output buffer **134** which buffers and synchronizes the data output DQ signal **138**. In response to a phase difference between the CLKIN signal **103** and the OUT_MDL signal **126**, the first phase detector **108** adjusts the delay of DLL Delay Elements **106** to the CLKIN signal **103** by sending respective ShiftL **110** and ShiftR **112** signals to the DLL Delay Elements **106** to phase-lock the rising edges of the CLKIN **103** and OUT_MDL **126** signals. The Output Buffer Model **130** models the delays generated by

the Output Buffer **134** and the CLK Buffer Model **128** models the delays generated by the Input Buffer **104** to produce an OUT_MD signal **126** such that alignment of the OUT_MD signal **126** with the CLKIN signal **103** will result in alignment of the XCLK signal **102** with the DQ signal **138**. Phase-locking the rising edges of the CLKIN **103** and OUT_MD **126** signals respectively causes the rising edges of the XCLK **602** and DQ **624** signals (FIG. 6) to align.

Once the first phase detector **108** has achieved a phase-lock, it outputs a phase-lock signal **124** to initiate operation of the comparator **148**. The comparator **148** compares the relative time durations of the high tPLH and low tPHL portions of the DLLCLK signal **118** and the DLLCLK* signal **122**, which is an inverted DLLCLK signal. In response to durational differences between tPLH and tPHL, the comparator **148** generates add and subtract signals **144**, **146**. The add and subtract signals **144**, **146** are used in the Rise Fall CLK Generator **132** to control the amount of delay added to or subtracted from the DLLCLK* signal **122** prior to generation of the DLLF signal **142**. The DLLR and DLLF signals **140**, **142** are generated in the Rise Fall CLK Generator **132** to correspond to the rising edge of the DLLCLK and (delayed) DLLCLK* signals **118**, **122**, respectively, and are used in the Output Buffer **134** to produce the output data timing signal **138**. As noted, the DLLR and DLLF signals **140**, **142** are also used in the Output Buffer Model and CLK Buffer Model blocks **130**, **128** to produce the OUT_MD signal **126**. The output data signal DQ on line **138** has both its rising and falling edges synchronized with the system clock XCLK **102**.

FIG. 4 illustrates an exemplary embodiment of circuitry within the comparator **148**. A first converter circuit **211** is connected between a reference voltage Vref and ground and includes two serially connected enabling transistors **202** and **204** and pull-down transistors **206**. Transistor **202** is connected to Vref while transistor **206** is connected to ground. When transistor **202** is on, a capacitor **214** is connected between the reference voltage Vref and ground as shown in FIG. 4. The upper plate of the capacitor, connected to the reference voltage Vref, is also connected to a first input (+) of a comparison circuit **220**. The gates of the enabling transistors **202** and **204** are controlled by the phase lock signal **124**. The gate of the pull-down transistor **206** is controlled by the DLLCLK signal **118**.

A second converter circuit **213** which is similar to converter circuit **211** is provided for a second input (-) of comparison circuit **220** as shown in FIG. 4. The second converter circuit **213** is of similar construction to that of converter **211**, except its pull-down transistor **212** is controlled by the DLLCLK* signal **122**. The upper plate of the capacitor **216** in the second converter circuit **213** is connected to a second input (-) of the comparison circuit **220**. Comparison circuit **220** compares the differences between the output of the converter circuits **211**, **213** for the DLLCLK and DLLCLK* signals **118**, **122**.

When the phase lock signal **124** is low, it will precharge capacitors **214** and **216** to Vref. When the phase lock signal **124** goes high to activate the gates of the enabling transistors **204**, **210**, the DLLCLK signal **118** controls the gate of the pull-down transistor **206** to selectively permit discharge of the capacitor **214** during the high time of the DLLCLK signal **118**. Also, the DLLCLK* signal **122** controls the gate of the pull-down transistor **212** to selectively permit the discharge of the capacitor **216** during the high time of the DLLCLK* signal **122**. Because the DLLCLK* and DLLCLK signals **122**, **118** are inverted and non-inverted versions of the same clock signal, the comparison circuit **220** is able to generate an

error signal **228** corresponding to the lack of symmetry in the output of the DLL delay elements **106**.

For example, if the ratio of high tPLH to the low tPHL portion of the DLL output is 60/40, then the comparison circuit **220** may generate an error signal **228** of appropriate polarity during the cycle which reflects the duration of the asymmetry, or 10% of the clock cycle in this example.

The error signal **228** is translated in the arbiter block **222** into two signals, the add signal **144** and the subtract signal **146**. The add and subtract signals **144**, **146** represent delay that may be added or subtracted, respectively, with respect to the timing of the falling edge of an output data signal **138** in order to achieve symmetry. The timing of the output data signal is determined in the Rise Fall CLK Generator **132** (FIG. 3). An example of using the add and subtract signals **144** and **146** in the Rise Fall CLK Generator **132** is illustrated in FIG. 5.

FIG. 5 shows an exemplary Rise Fall CLK Generator **132**. Each of the signals DLLR **140** and DLLF **142** are generated by passing the internal DLL clock signals DLLCLK and DLLCLK* **118** and **122**, respectively, through a Rise One-Shot Generator **302**, **304**, which generates a high pulse of short duration when it receives a transition from low to high. The DLLR and DLLF signals **140**, **142** are used to control the rising and falling of the output data signal **138** (FIG. 3).

As shown in FIG. 5, a Register Delay **306** is used in the DLLF data path upstream of the DLLF Rise One-Shot Generator **304**. The add and subtract signals **144**, **146** control the amount of delay added to or subtracted from the DLLCLK* signal **122** before the DLLF signal **142** is generated in the DLLF Rise One-Shot Generator **304**. In this way, the DLLF signal **142**, and hence the falling edge of the output data signal **138**, can be delayed an amount necessary to make the high tPHL and low tPLH portions of the DLL output signal substantially equal or within an allowed tolerance of each other. In other words, the output data signal **138** has a substantially symmetric duty cycle.

It should be readily understood that FIG. 5 illustrates merely one example of a Rise Fall CLK Generator **132**. Use of the Register Delay **306** in the DLLF data path is not required and it should be readily understood that a different delay circuit may be used in the DLLR data path with appropriate modifications to associated circuitry to achieve the same result. Alternatively, delay circuits may be used in both the DLLF and DLLR data paths with appropriate modifications to associated circuitry to achieve the same result. Also, the use of a Register Delay **306** is not required and other circuit elements may be used for timing synchronization as is well known in the art.

As demonstrated in the exemplary timing diagram of FIG. 6, by adjusting the delay of the DLLF signal **622**, the output data DQ **624** can be generated with a 50/50 ratio (duty cycle). For example, in FIG. 6 the system clock XCLK **602** is shown with a 60/40 ratio of high tPLH to low tPHL signal portions. Due to delays added by the DLL Delay Elements **106**, the DLLCLK and DLLCLK* signals **604**, **606** have a 65/35 ratio.

As shown in the first timing sequence **650**, prior to phase lock or any compensation using the circuitry of the invention, the DLLCLK and DLLCLK* signals **604**, **606** may produce corresponding DLLR and DLLF signals **608**, **610**, having a duty cycle not substantially equal to 50/50 and not in phase with the system clock XCLK signal **602**.

The second timing sequence **670** is produced after the phase-locking is completed by phase detector **108**, but before the operation of the comparator **148**. This second sequence **670** shows signals DLLR and DLLF signals **616**, **618** generated in phase with the rising edge of the system clock XCLK

602, but still having the asymmetric duty cycle of the system clock and further exacerbated by the DLL Delay Elements 106.

Finally, the third timing sequence 690 is produced using the comparator 148 and accompanying adjustment of the timing of the DLLF signal 142. The subtract signal 620 is generated in the arbiter block 222 of the comparator 148 (FIG. 4) and used to adjust the Register Delay 306 in the Rise Fall CLK Generator 132 (FIG. 5), thereby adjusting the timing of the DLLF signal 622, as shown in FIG. 6. The resulting output data signal 624 has an acceptable ratio of high tPLH to low tPHL signal portions and thus exhibits a substantially symmetric 50/50 duty cycle,

The symmetric quality of the output data signal 624 permits improvement of the timing budget by maximizing the data eye used for synchronization of data output.

Thus, in reference to FIGS. 3-6, to produce a symmetric data output signal DQ 138 having a rising edge aligned with the rising edge of the XCLK 102, a phase detector 108, comparator 148 and Rise Fall CLK Generator 132 are used to separately initiate rising and falling edges of the DQ signal 138. When a system clock signal XCLK 102 is received, it is processed and compared with a signal representative of the timing of a DQ signal 138. The processed system clock signal CLKIN 103 is delayed by DLL Delay Elements 106 controlled by a phase detector 108 to produce a delayed system clock signal DLLCLK* 122 is then further delayed by a Register Delay 306 under the control of a comparator 148. In this way, the rising edge of the system clock signal XCLK 102 may be aligned (phase locked) with the rising edge of the data output signal DQ 138 and the data output signal DQ 138 may be generated so that it is symmetric.

FIG. 7 illustrates a processor system which employs logic circuits and selection methodologies in accordance with the method and apparatus of the invention.

As shown in FIG. 7, a processor based system, such as a computer system 700, for example, generally comprises a central processing unit (CPU) 702, for example, a microprocessor, that communicates with one or more input/output (I/O) devices 712, 714, 716 over a system bus 722. The computer system 700 also includes random access memory (RAM) 718, a read only memory (ROM) 720 and, in the case of a computer system may include peripheral devices such as a floppy disk drive 704, a hard drive 706, a display 708 and a compact disk (CD) ROM drive 710 which also communicate with the processor 702 over the bus 722. The RAM 718 is preferably constructed with delay-lock loop (DLL) circuitry for synchronizing the data output of the memory devices with a system clock using the method and apparatus of the invention described above with reference to FIGS. 3-6. It should be noted that FIG. 7 is merely representative of many different types of processor system architectures which may employ the invention.

As illustrated in FIG. 8, in another embodiment of the invention, a memory system 900 is provided including at least one or a plurality of memory devices 933 constructed with delay-lock loop (DLL) circuitry which can be used to synchronize the data output of the memory devices 933 with a system clock using the method and apparatus of the invention described above with reference to FIGS. 3-6. Within the memory system 900, some or all of the plurality of memory devices 933 may be arranged on at least one memory module 935. In a preferred configuration, the memory system 900 would include a plurality of memory modules 935, each containing at least one or a plurality of memory devices 933

constructed with the synchronizing circuitry as described above with reference to FIGS. 3-6.

While the invention has been described and illustrated with reference to specific exemplary embodiments, it should be understood that many modifications and substitutions can be made without departing from the spirit and scope of the invention. Accordingly, the invention is not to be considered as limited by the foregoing description but is only limited by the scope of the appended claims.

The invention claimed is:

1. A method of synchronizing an output signal with a first clock signal, said method comprising:
 - deriving a local clock signal from the first clock signal;
 - producing a delayed clock signal from the local clock signal;
 - producing first and second timing signals, each associated with one of a rising and falling edge of the delayed clock signal;
 - adjusting a relative timing of one of the first and second timing signals to produce substantially equal time durations between occurrences of the first and second timing signals; and
 - generating the output signal having a rising edge synchronized with a rising edge of the first clock signal in response to the first and second timing signals.
2. The method of claim 1, wherein the output signal is generated with a substantially symmetric duty cycle.
3. The method of claim 1, further comprising detecting a difference in phase between the local clock signal derived from the first clock signal and a signal representative of the output signal.
4. The method of claim 1, further comprising measuring a difference between a low time of the delayed clock signal and a low time of an inverse of the delayed clock signal.
5. The mod of claim 1, further comprising measuring a difference between a high time of the delayed clock signal and a high time of an inverse of the delayed clock signal.
6. The method of claim 5, further comprising generating at least two adjustment signals from an error signal based on the measuring step, the adjustment signals being used to produce at least one of the first and second timing signals.
7. The method of claim 1, further comprising:
 - delaying the delayed clock signal by a fixed number of delays; and
 - delaying the second timing signal by a variable number of delays.
8. A method of synchronizing an output signal with a first clock signal, said method comprising:
 - deriving a local clock signal from the first clock signal;
 - producing a delayed clock signal from a local clock signal;
 - comparing a first delay characteristic associated with the delayed clock signal with a second delay characteristic associated with an inverse of the delayed clock signal;
 - generating a first one-shot timing signal from the delayed clock signal and a second one-shot timing signal from an adjustably delayed signal associated with the inverse of the delayed clock signal;
 - adjusting the adjustably delayed signal to produce substantially equal time durations between occurrences of the first and second one-shot timing signals; and
 - generating the output signal from the first and second one-shot timing signals.
9. The method of claim 8, wherein the output signal is generated having a substantially symmetric duty cycle.

9

10. The method of claim 8, wherein the first delay characteristic is a low time of the delayed clock signal and the second delay characteristic is a high time of the inverse of the delayed clock signal.

11. The method of claim 8, wherein the first delay characteristic is a high time of the delayed clock signal and the second delay characteristic is a high time of the inverse of the delayed clock signal.

12. A memory system comprising:

a synchronization circuit, the synchronization circuit comprising:

a first circuit configured to produce a first timing signal based on phase-locking a first edge of an output signal to a first edge of a first clock signal and to produce a second timing signal based on a duty cycle of a delayed first clock signal; and

a second circuit configured to use the first and second timing signals to output the output signal synchronized with the first clock signal and having a substantially symmetrical duty cycle.

13. The system of claim 12, wherein the second circuit is configured to output the output signal by generating a rising

10

edge of the output signal in response to the first timing signal and generating a falling edge of the output signal in response to the second timing signal.

14. The system of claim 12, wherein the second circuit is configured to output the output signal by generating a rising edge of the output signal in response to the second timing signal and generating a falling edge of the output signal in response to the first timing signal.

15. The system of claim 12, wherein the first circuit comprises:

a comparator configured to compare a signal representative of the output signal with a local clock signal derived from the first clock signal; and

a clock generator configured to generate the delayed clock signal in response to a phase difference between the local clock signal and the signal representative of the output signal.

16. The system of claim 12, wherein the output signal is a strobe signal.

17. The system of claim 12, wherein the output signal is a data signal.

* * * * *

UNITED STATES PATENT AND TRADEMARK OFFICE
CERTIFICATE OF CORRECTION

PATENT NO. : 7,421,607 B2
APPLICATION NO. : 11/751182
DATED : September 2, 2008
INVENTOR(S) : Li et al.

Page 1 of 1

It is certified that error appears in the above-identified patent and that said Letters Patent is hereby corrected as shown below:

In column 8, line 37, in Claim 5, delete "mod" and insert -- method --, therefor.

Signed and Sealed this

Fourth Day of November, 2008

A handwritten signature in black ink that reads "Jon W. Dudas". The signature is written in a cursive style with a large, looping initial "J".

JON W. DUDAS
Director of the United States Patent and Trademark Office