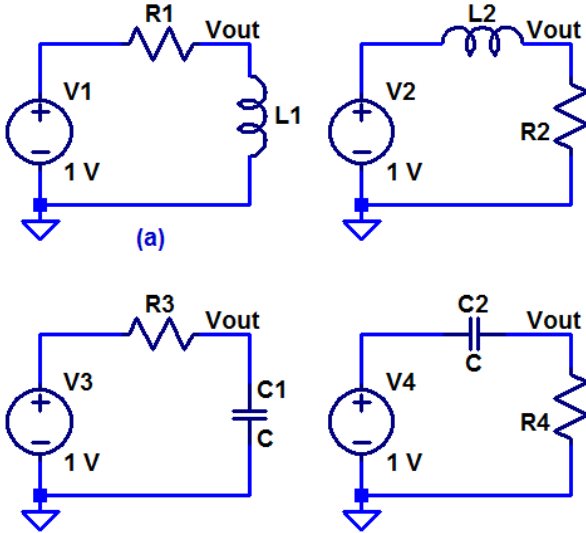
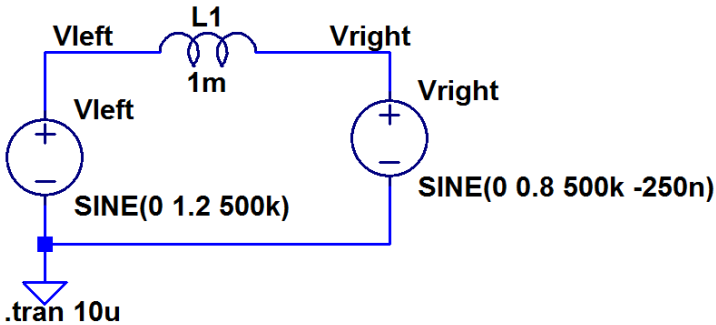


H.W. #14 EE 220 Summer 2014

1. What is  $V_{out}$  in each of the following circuits? Briefly explain each of your answers. Note that this problem doesn't involve math or equations.



2. If we represent  $V_{left}$  as a phasor having a magnitude of 1.2 and an angle of 0 degrees how would we represent  $V_{right}$  as a phasor? Calculate the current through the inductor and verify with LTspice.



3. The input in the following circuit is a pulse that goes from 0 to 5 at 5 ns. Write an equation for the voltage across the capacitor as a function of time. Write an equation for the current that flows in the circuit. Verify your answers with LTspice.

