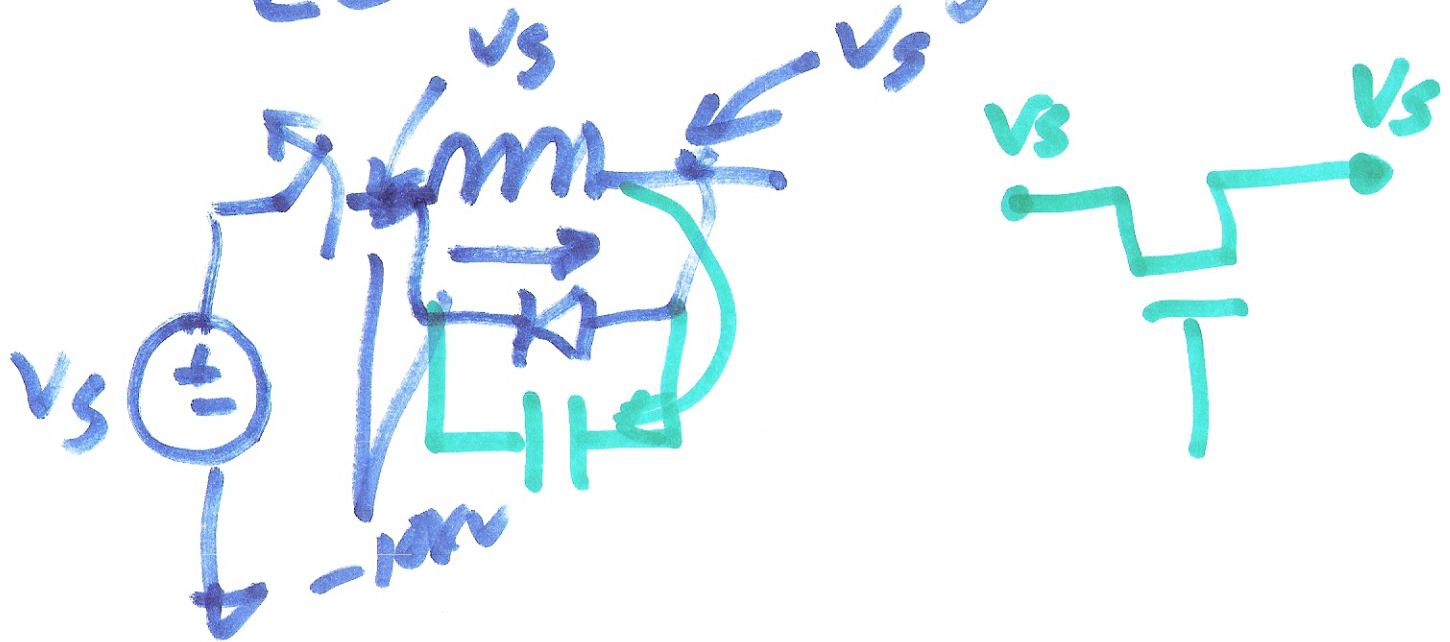


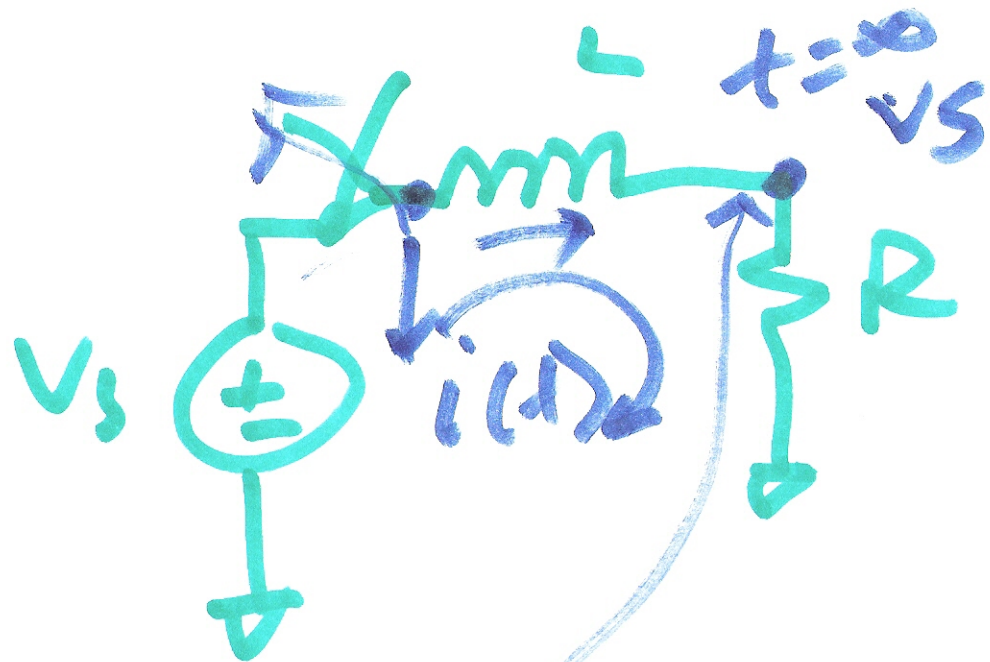
OCT. 29, 2010

Lecture 28



Zero Voltage Switching





$t=0$ switch closed

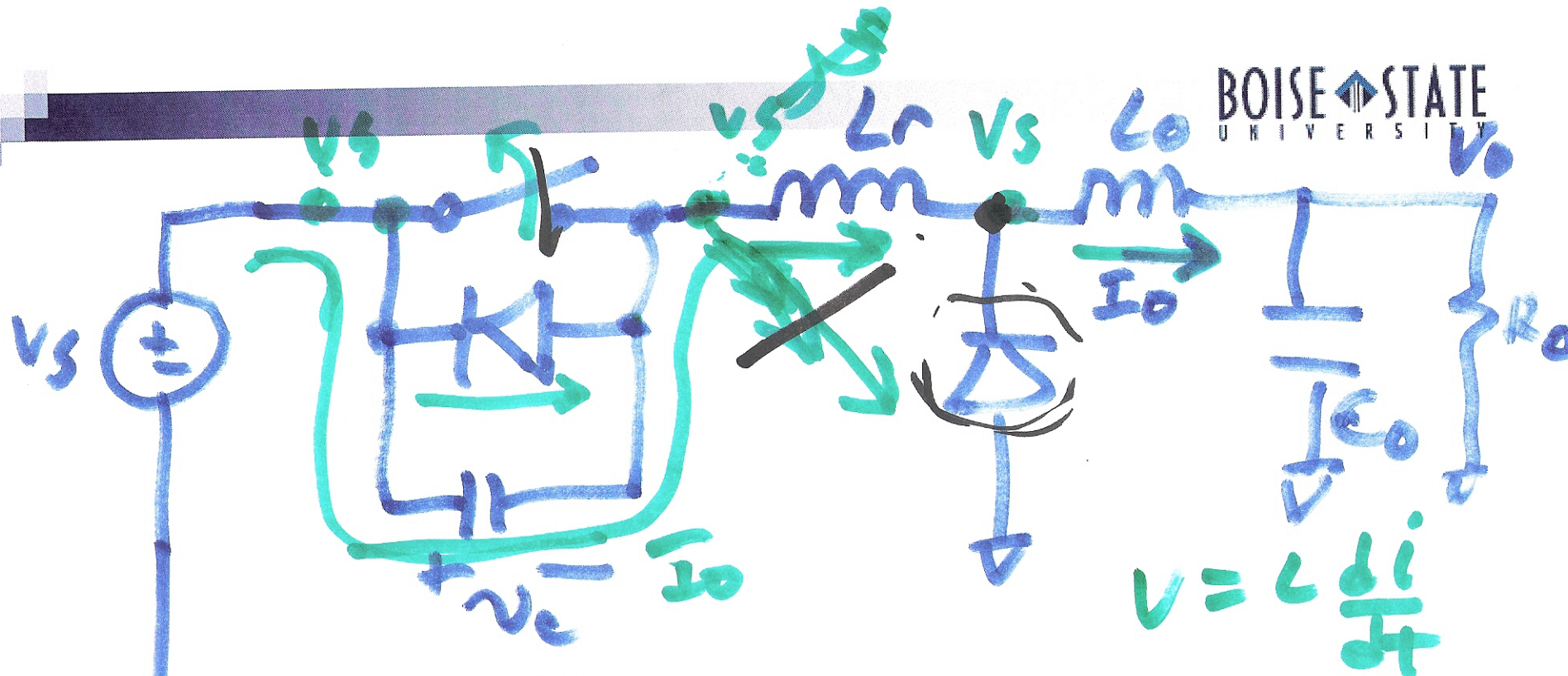
$$i(0_+) = 0$$

$t=\infty$

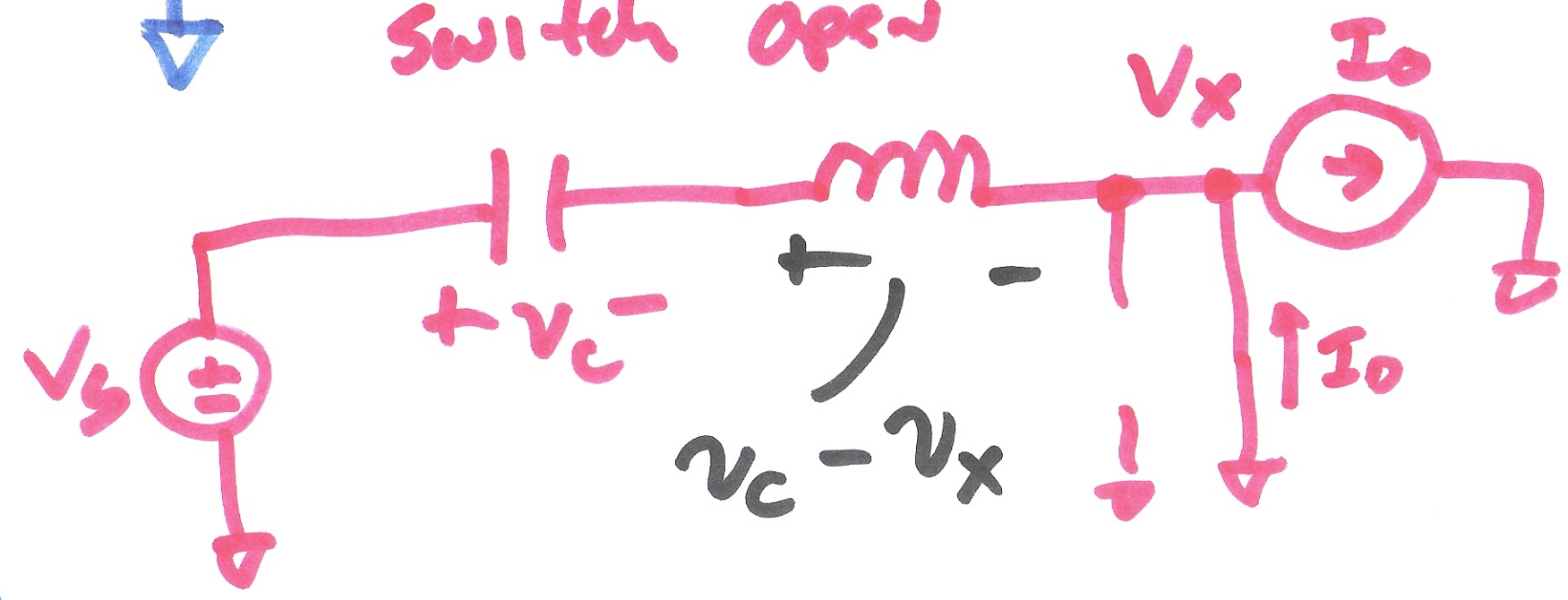
$$i(\infty) = \frac{v_s}{R}$$

$$i(t) = \frac{v_s}{R} \left(1 - e^{-t/4R} \right)$$

2)



Switch open



3)